




HOW DOES \$6.50 COMPARE?

\$6.50 – General Assembly per capita rate for 2011

\$7.95	average cost of a movie ticket	
\$4.41	average cost of coffee /person/day	
\$1,609.65	annual cost a person will spend on coffee	
\$11.49	average price of a pound of ribeye steak	
\$7.00	median price of adult admission to a museum	
\$2.75	average price for a gallon of regular unleaded gasoline	
\$8.00	average cost of a medium cheese pizza	
\$2.07	average cost to dry clean a dress shirt	
\$7.97	12 issues of <i>Good Housekeeping</i>	
\$7.00	average hourly cost for babysitting	
\$3.50	average cost of a Happy Meal at McDonalds	
\$1.00	average daily cost for Internet usage	
\$78.00	average cost for mobile phone monthly plan	

WHAT GA PER CAPITA SUPPORTS

Per capita dollars help the church be the church and are related to the functions of the Stated Clerk through actions of the General Assembly.

Here's a brief look at what per capita funds at the General Assembly level:



- **General Assembly meetings**
planning for General Assemblies and other related gatherings through the GA Meeting Service
- **Permanent and special GA committees and commissions**
staffing, training and meeting costs for the:
 - Committee on the Office of the General Assembly
 - GA Committee on Representation
 - GA Nominating Committee
 - GA Committee on Ecumenical and Interreligious Relations
 - GA Permanent Judicial Commission

Advisory Committee on the Constitution

Advisory Committee on Litigation

Presbyteries' Cooperative Committee on Examinations

Stated Clerk Nomination Committee

- **Vocational matters**
providing support in identifying and developing leadership for the PC(USA) and the whole body of Christ through the Office of Vocation, a shared ministry of the Office of the General Assembly (OGA) and the General Assembly Mission Council (GAMC)
- **Church Leadership Connection**
a Web-based matching and referral system for all Presbyterian church leaders



- **Immigration issues**

communicates with presbyteries, synods, PC(USA) entities and ecumenical agencies on immigration issues and policies; offers advice and counsel to presbyteries and pastors whose members have immigration issues or questions

- **Presbyterian Historical Society**

collects, preserves and shares information on American Presbyterianism; encourages appreciation of the church's heritage



- **Constitutional services**

maintains judicial and legislative services required by the PC(USA) Constitution; helps to interpret the Constitution

- **Moderator of the General Assembly**

coordinates the schedule and ministry of the GA Moderator and Vice-Moderator

- **Communications**

coordinates development and implementation of the electronic system used to access GA business; maintains the OGA Web site; coordinates communication from the Stated

Clerk, GA Moderator, and other areas of OGA to the PC(USA) and beyond

- **PC(USA) statistics**

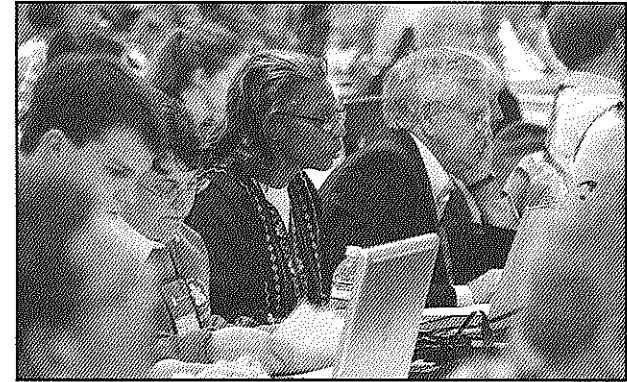
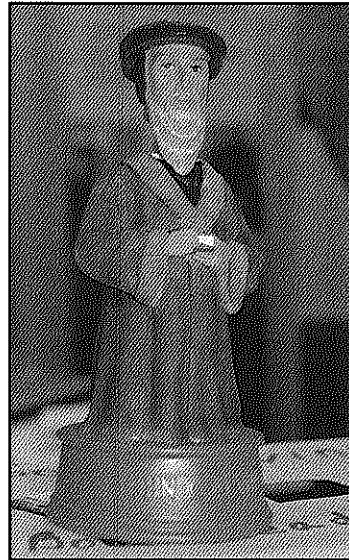
preparation of annual statistics that include the number of congregations, number of church members, summary of finances and more

- **Middle governing body relations**

partnering with presbyteries and synods in the work of the church

- **Representation**

coordinating accountability for openness, working for full participation and inclusion



- **GA publications**

publication and distribution of the *Book of Order* and *The Book of Confessions*; the GA Minutes, and other GA-related reports, studies and publications

- **Leadership development**

includes national elders conference, moderators conference, polity conference, Christian educator certification, support for committees on ministry and committees on preparation for ministry

- **PC(USA)'s participation in the ecumenical world**

coordinates the ecumenical responsibilities of the OGA and the Stated Clerk; extends the church's mission efforts and our work for peace and justice far beyond what we can do by ourselves; promotes Christian unity includes the National

Council of Churches of Christ, World Council of Churches and the World Communion of Reformed Churches

- **Office of the General Assembly**

one of six agencies of the PC(USA) and under the direction of the Stated Clerk; provides for the overall coordination of work of the GA between meetings and assists the Stated Clerk in carrying out the duties assigned to the Clerk by the GA

- **A portion of the activities of the General Assembly Mission Council executive director's office**

includes GAMC meetings, advisory and advocacy committees, task forces, legal services and communication